


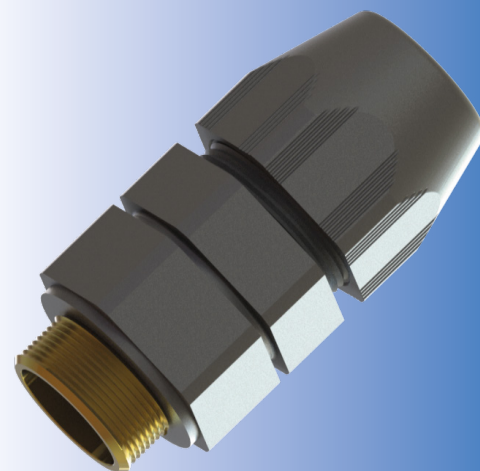
Corrosion Proof Cable Gland for SWA and AWA Cables

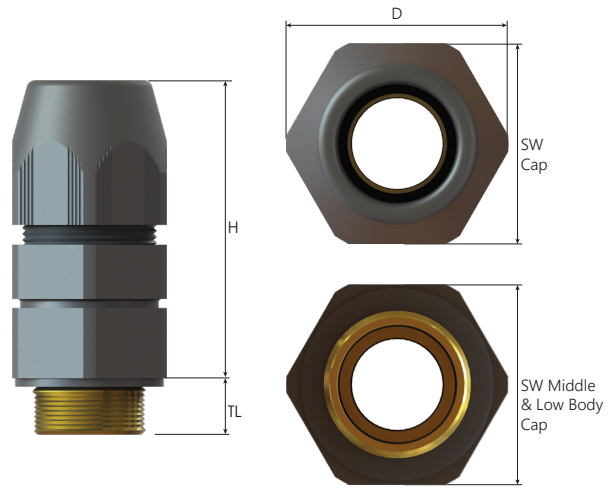
Cable Gland with Hybride Structure (Brass and Polyamide)

- No need for a shroud against the corrosive environment.
- Inspectionability of armor clamping.
- Halogen-free materials.
- Armour earth continuity thanks to metal armor ring and body.
- High-quality strain relief and reliable sealing performance for standard industrial applications.

Technical Details

Material	Bodies, Cap	PA6	
	Inner Part	Brass	
	Seal	NBR	
	O-ring	NBR	
Ingress Protection Rating		IP 68	
		IP 66	
Flammability	V0 according to UL94		
Operating Temperature	Permanent	-20°C to +80°C	
	Intermittent	-40°C to +150°C	
Thread Type	• Metric (M) ISO Pitch 1,5		
Cable Type	SWA - AWA		
	• Lock nuts • Serrated Washers • Earth tags		
Accessories	<ul style="list-style-type: none"> • Manufactured according to DIN EN 62444/50262. • The standard version includes a gasket. Cable glands ensure IP rating even for a rough surface. • Accessories must be ordered separately. 		
Remarks			
Approvals	Certificate Number	Standards	
		1815892	EN 62444:2013





Corrosion Proof Cable Gland for SWA and AWA Cables

Thread Type **METRIC** acc. to ISO 965-3

Outer Thread Size (Male)	Clamping Range		Armour Wire Ø min-max mm	Outer Thread Length TL mm	Cap SW Cap mm	Spanner Width		Outer Ø D mm	min. Height		Part Number
	Inner Sheath Ø max mm	Outer Sheath Ø min-max mm				Upper Body SW Upper Body mm	Lower Body SW Lower Body mm		H mm		
M20x1,5	12,0	8,0 - 12,0	0,80 - 1,25	17,0	27,0	27,0	27,0	30,0	51,0	BCW-21	
M20x1,5	12,0	10,5 - 16,0	0,80 - 1,25	17,0	27,0	27,0	27,0	30,0	51,0	BCW-22	
M20x1,5	16,0	15,5 - 21,0	0,80 - 1,25	17,0	32,0	32,0	32,0	35,5	51,0	BCW-23	
M25x1,5	21,0	20,5 - 27,5	1,20 - 1,60	17,0	41,0	41,0	41,0	45,5	61,0	BCW-25	
M32x1,5	28,0	27,0 - 35,0	1,60 - 2,00	17,0	50,0	50,0	50,0	55,5	71,0	BCW-27	
M40x1,5	32,0	33,0 - 41,0	1,60 - 2,00	22,0	58,0	58,0	58,0	63,0	73,0	BCW-29	
M50x1,5	44,0	37,0 - 47,0	2,00 - 2,50	22,0	72,0	72,0	72,0	79,0	79,0	BCW-30	
	44,0	45,0 - 53,0	2,00 - 2,50	22,0	72,0	72,0	72,0	79,0	79,0	BCW-31	
M63x1,5	56,0	50,0 - 60,0	2,00 - 2,50	22,0	85,0	85,0	85,0	93,0	82,0	BCW-32	
	56,0	58,0 - 66,0	2,00 - 2,50	22,0	85,0	85,0	85,0	93,0	82,0	BCW-33	